

THE SKYLAND Z.H.



SPECIFICATIONS

- Square Feet: 2,730*
- Bedrooms: 3
- Bathrooms: 2.5
- Garage Bays: 3
- Garage Sq. Ft. 753*
- Stories: 2

COMMUNITIES

- Great Basin Estates ✕
- Hamilton Stage ✓
- Spring Creek ✓
- Sun Valley Estates ✓
- Tower Hill ✕
- Zephyr Heights ✓

www.BeckBuiltHomes.com

In Partnership With:

For information and private showings:



NV LIC # 58200

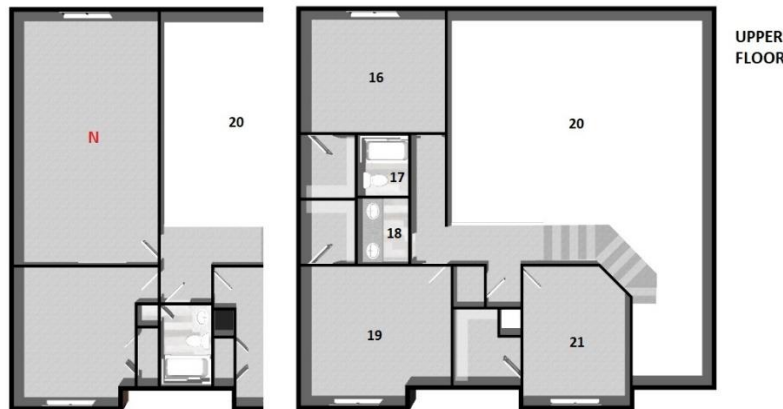


NV LIC # BS.0027506



(775) 753-2898

The Vicky Blair Group
990 5th Street, Elko, NV 89801



ROOMS and SIZES

<p>1: Back Patio 16' 0" x 10' 0"</p> <p>2: Kitchen 14' 2" x 17' 11"</p> <p>3: Dining Room 11' 7" x 14' 5"</p>	<p>4: Double Car Garage Bay 20' 6" x 22' 0"</p> <p>5: Living Room 19' 8" x 15' 9"</p> <p>6: Laundry Room 9' 1" x 6' 6"</p> <p>7: Powder Room 3' 6" x 8' 0"</p>	<p>8: Single Car Garage Bay 13' 1" x 20' 1"</p> <p>9: Foyer 6' 2" x 22' 4"</p> <p>10: Walk in Closet 14' 3" x 7' 11"</p> <p>11: Master Bathroom 10' 7" x 11' 3"</p>	<p>12: Master Bedroom 14' 1" x 20' 3"</p> <p>13: Open to Below 23' 6" x 15' 9"</p> <p>14: Bedroom 1 14' 1" x 12' 11"</p> <p>15: Bonus Room 13' 1" x 24' 0"</p>	<p>16: Open to Below 10' 0" x 18' 1"</p> <p>17: Wash Room 5' 2" x 9' 6"</p> <p>18: Bathroom 5' 0" x 09' 6"</p> <p>19: Bedroom 2 14' 1" x 12' 6"</p>
--	--	---	--	---

STANDARD FEATURES

- | | | | | |
|---|--|---|--|---|
| <ul style="list-style-type: none"> • 9' ceilings. • Crawl space • 3-tone vinyl siding exterior • 30-year architectural shingles • Rain gutters • Granite counter tops | <ul style="list-style-type: none"> • Tile backsplash • Luxury vinyl plank flooring • Painted or stained cabinets with crown molding • Stainless steel appliances • Garbage disposal • Central air conditioning • 2-tone painted interiors | <ul style="list-style-type: none"> • Brushed nickel hardware • Soaker tub with tile surround • Separate shower in master bathroom • Dual vanity in master bathroom • Enclosed toilet room • Dual pane vinyl windows | <ul style="list-style-type: none"> • 7' x 3' kitchen island • Keypad entry and remote openers on garage doors • 2 Exterior hose bibs <p>OPTIONAL FEATURES</p> <ul style="list-style-type: none"> A. Man Door B. 20' x 16' Rear Covered Patio | <ul style="list-style-type: none"> C. Wall of Windows D. Deep Basin Sink E. Fireplace F. Walk in Shower G. Night Stand Windows H. Extra Windows I. Side Windows J. Side Windows |
|---|--|---|--|---|



* Square footage and dimensions are approximates only. Renderings, photographs, finish materials, landscaping, flatwork, lighting and all other visuals depicted in this printing or online may not accurately represent your finished home. Some materials shown are optional and may not be available in your community. Certain materials may become discontinued or unavailable and may be substituted with an alternative product at Builder's discretion.