

# THE TOPAZ II G.B.E.



## SPECIFICATIONS

- Square Feet: 1,561 - 3122\*
- Bedrooms: 3 - 6
- Bathrooms: 2 - 3
- Garage Bays: 2 - 3
- Garage Sq. Ft. 484 - 848\*
- Stories: 1 + Bsmt

## COMMUNITIES

- Great Basin Estates ✓
- Hamilton Stage ✓
- Spring Creek ✓
- Sun Valley Estates ✓
- Zephyr Heights ✗



NV LIC # 58200



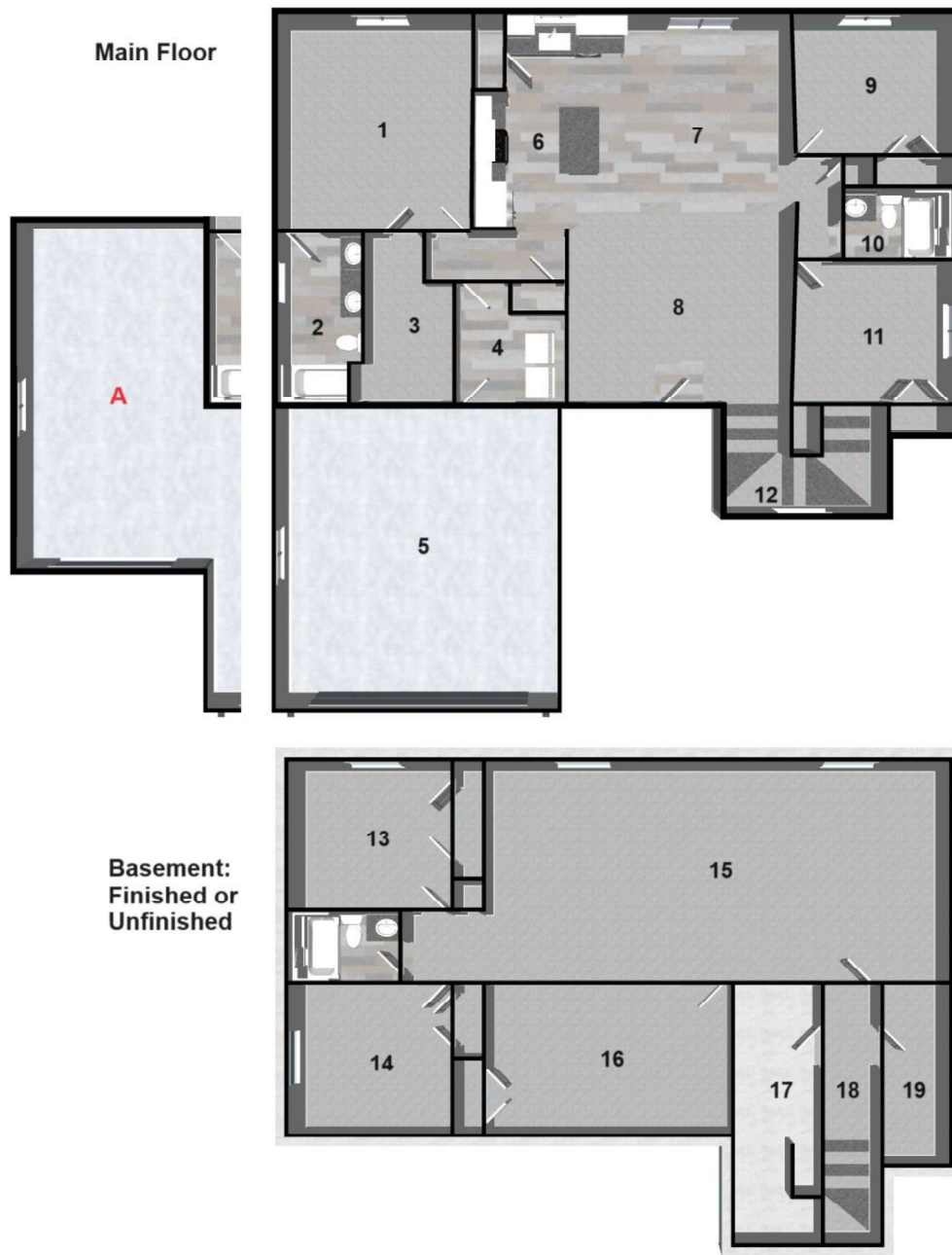
NV LIC # BS.0027506



For information and private showings:

(775) 753-2898

The Vicky Blair Group  
990 5<sup>th</sup> Street, Elko, NV 89801



**ROOMS and SIZES\***

1: Master Bedroom 14' 5" x 15' 6"	2: Master Bathroom 6' 0" x 12' 3"	3: Walk in Closet 6' 4 x 9' 0"	4: Laundry Room 6' 6" x 5' 4"	5: Double Car Garage Bay 20' 5" x 21' 8"	6: Kitchen 6' 0" x 6' 0"	7: Dining Room 11' 8" x 13' 9"	8: Living room 16' 0" x 14' 7"	9: Bedroom 1 11' 9" x 10' 10"	10: Hall Bathroom 8' 0" x 5' 0"	11: Bedroom 2 11' 9" x 10' 7"	12: Stairs 4' wide	13: Bedroom 3 11' 9" x 10' 9"	14: Bedroom 4 11' 9" x 10' 9"	15: Family Room 11' 8" x 16' 0"	16: Flex Room 17' 10" x 10' 9"	17: Storage/ Mechanical 6' 3" x 18' 9"	18: Hall 4' 0" x 11' 7"	19: Walk-in Storage Closet 4' 8" x 13' 0"
--------------------------------------	--------------------------------------	-----------------------------------	----------------------------------	---	-----------------------------	-----------------------------------	-----------------------------------	----------------------------------	------------------------------------	----------------------------------	-----------------------	----------------------------------	----------------------------------	------------------------------------	-----------------------------------	---	----------------------------	--

**OPTIONAL FEATURES**

- A.** 3rd Car Garage Bay  
14' 0" x 26' 0"

**STANDARD FEATURES**

- 8' Vaulted Ceilings
- Finished or unfinished bsmt
- 3-tone vinyl siding exterior
- 30-year architectural shingles
- Granite counter tops
- Luxury Vinyl Plank Flooring
- Painted or stained cabinets
- Stainless steel appliances
- Garbage disposal
- Central air conditioning
- 2-tone painted interiors
- Brushed nickel hardware
- Dual pane vinyl windows
- 5' x 3' kitchen island
- Keypad entry and remote openers on garage doors
- 2 Exterior hose bibs